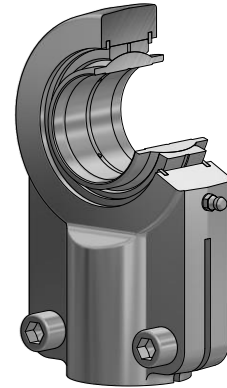


Hydraulik-Gelenkkopf GIHNRK...-LO mit Gewinde-Klemmreinrichtung, offen

wartungspflichtig

Hauptabmessungen nach DIN 24338 ISO 6982





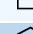


Gleitpaarung: Stahl/Stahl



Baureihe: GIHNRK...-LO

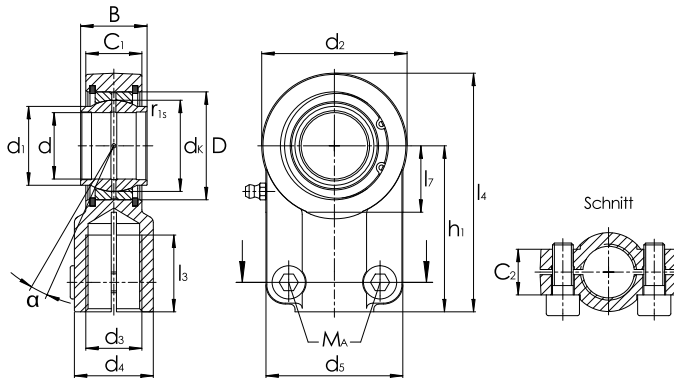
GIHNRK...-LO

Maßtabelle - Abmessungen in mm

Wellen- durch- messer	Kurzzeichen ¹⁾	Gewicht ≈ kg	Abmessungen													
			d ²⁾	D	B	d _k	d ₁	d ₂	d ₃	d ₄	h ₁	C ₁				
12	GIHNRK12-LO ²⁾⁴⁾   	0,1	12 ^{0,018}	22	12	-0,180	18,0	15,5	32	M12x1,25	17	38	10,6			
16	GIHNRK16-LO ⁴⁾   	0,2	16 ^{0,018}	28	16	-0,180	23,0	20,0	40	M14x1,5	21	44	13,0			
20	GIHNRK20-LO   	0,4	20 ^{0,021}	35	20	-0,210	29,0	25,0	47	M16x1,5	25	52	17,0			
25	GIHNRK25-LO   	0,7	25 ^{0,021}	42	25	-0,210	35,5	30,5	58	M20x1,5	30	65	21,0			
32	GIHNRK32-LO   	1,2	32 ^{0,025}	52	32	-0,250	44,0	38,0	70	M27x2	38	80	27,0			
40	GIHNRK40-LO ⁵⁾   	2,1	40 ^{0,025}	62	40	-0,250	53,0	46,0	89	M33x2	47	97	32,0			
50	GIHNRK50-LO ⁵⁾   	4,4	50 ^{0,025}	75	50	-0,250	66,0	57,0	108	M42x2	58	120	40,0			
63	GIHNRK63-LO ⁵⁾   	7,6	63 ^{0,030}	95	63	-0,300	83,0	71,5	132	M48x2	70	140	52,0			

-
- 1) Bohrungstoleranz: H7 (arithm. Mittelwert).
 - 2) Nicht nachschmierbar.
 - 3) Nicht in DIN 24 338 enthalten.
 - 4) Durchgehend zylindrisch.
 - 5) Gewindeauslauf oder Gewinderille nach Herstellerwahl.
 - 6) Kopftragzahl.

Hydraulik-Gelenkkopf GIHNRK...-LO mit Gewinde-Klemmreinrichtung, offen



GIHNRK...-LO

α	l_3	l_4	l_7	d_5	C_2	Tragzahlen		Radiale Lagerluft	Zylinder-Nennkraft	Zylinder-schrauben DIN EN ISO 4762	Anzieh-drehmoment M_A	Wellen-durch-messer d
						dyn. C_r kN	stat. $C_{0r}^{(6)}$ kN					
4	17	54	14	32	11	10,8	24,0	0,023 – 0,068	8	M5x12	8	12
4	19	64	18	40	13	17,6	35,3	0,030 – 0,082	13	M6x16	13	16
4	23	75	22	47	17	30,0	41,4	0,030 – 0,082	20	M8x20	32	20
4	29	94	27	54	17	48,0	69,9	0,037 – 0,100	32	M8x20	32	25
4	37	115	32	66	22	67,0	98,8	0,037 – 0,100	50	M10x25	64	32
4	46	142	41	80	26	100,0	175,0	0,043 – 0,120	80	M10x25	64	40
4	57	174	50	96	32	156,0	268,0	0,043 – 0,120	125	M12x30	110	50
4	64	211	62	114	38	255,0	320,0	0,055 – 0,142	200	M12x35	80	63