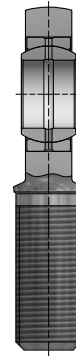
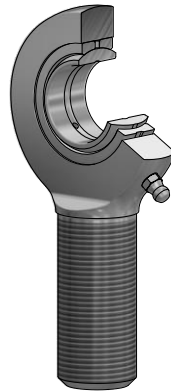


Radial-Gelenkkopf GAR...-DO mit Außengewinde, offen

wartungspflichtig
 Hauptabmessungen
 nach DIN ISO 12240-4
 Maßreihe E, Form M
 Gleitpaarung: Stahl/Stahl



Baureihe: GAR...-DO

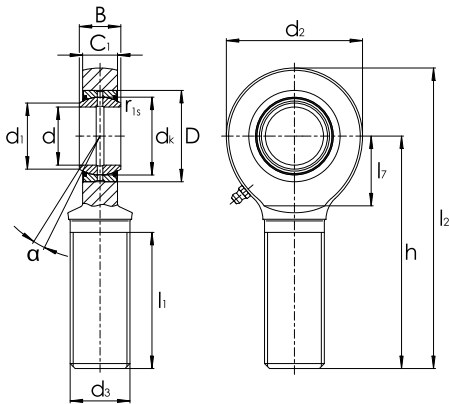
GAR...-DO, GAR...-DO-2RS

Maßtabelle - Abmessungen in mm

Wellen- durch- messer	Kurzzzeichen ¹⁾ ohne Abdichtung	Gewicht ≈ kg	Abmessungen									
			d	D	B	d _k	d ₁	d ₂	d ₃			
6	GAR6-DO ²⁾	0,018	6 ^{-0,008}	14	6 ^{-0,12}	10,0	8,0	21	M6			
8	GAR8-DO ²⁾	0,032	8 ^{-0,008}	16	8 ^{-0,12}	13,0	10,2	24	M8			
10	GAR10-DO ²⁾	0,054	10 ^{-0,008}	19	9 ^{-0,12}	16,0	13,2	29	M10			
12	GAR12-DO ²⁾	0,086	12 ^{-0,008}	22	10 ^{-0,12}	18,0	14,9	34	M12			
15	GAR15-DO ³⁾	0,140	15 ^{-0,008}	26	12 ^{-0,12}	22,0	18,4	40	M14			
17	GAR17-DO ³⁾	0,200	17 ^{-0,008}	30	14 ^{-0,12}	25,0	20,7	46	M16			
20	GAR20-DO ³⁾	0,310	20 ^{-0,010}	35	16 ^{-0,12}	29,0	24,1	53	M20x1,5			
25	GAR25-DO	0,560	25 ^{-0,010}	42	20 ^{-0,12}	35,5	29,3	64	M24x2			
30	GAR30-DO	0,890	30 ^{-0,010}	47	22 ^{-0,12}	40,7	34,2	73	M30x2			

-
- 1) Bei Linksgewinde wird das R durch ein L ersetzt – (Beispiel: GAL..).
 - 2) Nicht nachschmierbar.
 - 3) Nachschmierung über ein Schmierloch im Gehäuse.
 - 4) Kopftragzahl.

Radial-Gelenkkopf GAR...-DO mit Außengewinde, offen



GAR...-DO, GAR...-DO-2RS

h	C ₁	α Grad	l ₁	l ₂	l ₇	Kantenabstand r _{1s} min.	Tragzahlen		Radiale Lagerluft	Wellen- durchmesser d
							dyn. C _r kN	stat. C _{0r} ⁴⁾ kN		
36	4,4	13	18	46,5	12,0	0,3	3,40	6,92	0,023 – 0,068	6
42	6,0	15	22	54,0	14,0	0,3	5,50	12,90	0,023 – 0,068	8
48	7,0	12	26	62,5	15,0	0,3	8,15	20,60	0,023 – 0,068	10
54	8,0	11	28	71,0	18,0	0,3	10,80	30,10	0,023 – 0,068	12
63	10,0	8	34	83,0	20,0	0,3	17,00	41,50	0,030 – 0,082	15
69	11,0	10	36	92,0	23,0	0,3	21,20	56,50	0,030 – 0,082	17
78	13,0	9	43	104,5	27,0	0,3	30,00	75,60	0,030 – 0,082	20
94	17,0	7	53	126,0	32,0	0,6	48,00	88,20	0,037 – 0,100	25
110	19,0	6	65	146,5	37,0	0,6	62,00	119,00	0,037 – 0,100	30

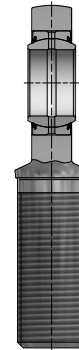
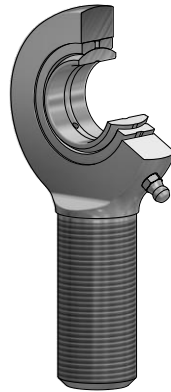
Radial-Gelenkkopf GAR...-DO-2RS mit Außengewinde, beidseitig abgedichtet

wartungspflichtig

Rechtsgewinde

DIN ISO 12 240-4-Maßreihe E, Form M






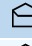

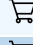
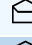

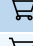






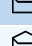

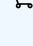
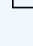
Gleitpaarung: Stahl/Stahl



Baureihe: GAR...-DO-2RS

GAR...-DO, GAR...-DO-2RS

Maßtabelle - Abmessungen in mm

Wellen- durch- messer	Kurzzzeichen ¹⁾ mit Abdichtung	Gewicht ≈ kg	Abmessungen									
			d	D	B	d _k	d ₁	d ₂	d ₃			
35	GAR35-DO-2RS   	1,400	35 _{-0,012}	55	25 _{-0,12}	47	39,7	82	M36x3			
40	GAR40-DO-2RS   	1,800	40 _{-0,012}	62	28 _{-0,12}	53	45,0	92	M39x3			
45	GAR45-DO-2RS   	2,600	45 _{-0,012}	68	32 _{-0,12}	60	50,7	102	M42x3			
50	GAR50-DO-2RS   	3,400	50 _{-0,012}	75	35 _{-0,12}	66	55,9	112	M45x3			
60	GAR60-DO-2RS   	5,900	60 _{-0,015}	90	44 _{-0,15}	80	66,8	135	M52x3			
70	GAR70-DO-2RS   	8,200	70 _{-0,015}	105	49 _{-0,15}	92	77,8	160	M56x4			
80	GAR80-DO-2RS   	12,000	80 _{-0,015}	120	55 _{-0,15}	105	89,4	180	M64x4			

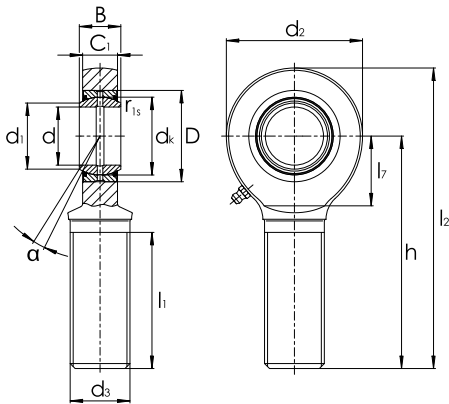
1) Bei Linksgewinde wird das R durch ein L ersetzt – (Beispiel: GAL..).

2) Nicht nachschmierbar.

3) Nachschmierung über ein Schmierloch im Gehäuse.

4) Kopftragzahl.

Radial-Gelenkkopf GAR...-DO-2RS mit Außengewinde, beidseitig abgedichtet



GAR...-DO, GAR...-DO-2RS

h	C ₁	α Grad	l ₁	l ₂	l ₇	Kantenabstand r _{1s} min.	Tragzahlen		Radiale Lagerluft	Wellen- durchmesser d
							dyn. C _r kN	stat. C _{0r} ⁴⁾ kN		
140	21	6	82	181,0	42	0,6	80	159	0,037 – 0,100	35
150	23	7	86	196,0	48	0,6	100	194	0,043 – 0,120	40
163	27	7	94	214,0	52	0,6	127	259	0,043 – 0,120	45
185	30	6	107	241,0	60	0,6	156	313	0,043 – 0,120	50
210	38	6	115	277,5	75	1,0	245	485	0,043 – 0,120	60
235	42	6	125	315,0	87	1,0	315	564	0,055 – 0,142	70
270	47	6	140	360,0	100	1,0	400	689	0,055 – 0,142	80