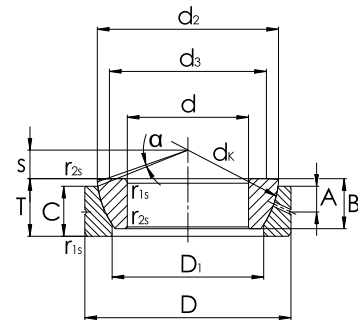


## Schräg-Gelenklager

wartungsfrei  
DIN ISO 12 240-2  
Gleitpaarung: Stahl/ Stahl  
Baureihe GE...-SX

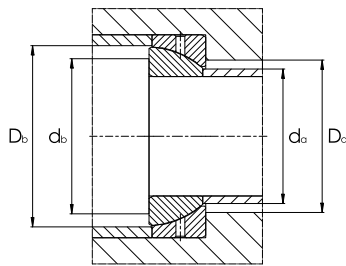


GE...-SX

| Maßtabelle - Abmessungen in mm |             |                   |             |        |     |        |                |       |       |       |    |       |    |       |
|--------------------------------|-------------|-------------------|-------------|--------|-----|--------|----------------|-------|-------|-------|----|-------|----|-------|
| Wellen-<br>durch-<br>messer    | Kurzzeichen | Masse<br><br>≈ kg | Abmessungen |        |     |        |                |       |       |       |    |       |    |       |
|                                |             |                   | d           | D      | T   | dk     | D <sub>1</sub> | B     | C     |       |    |       |    |       |
| 25                             | GE25-SX     | 0,14              | 25          | -0,012 | 47  | -0,014 | 15             | ±0,25 | 42,5  | 31,4  | 14 | -0,20 | 14 | -0,20 |
| 28                             | GE28-SX     | 0,18              | 28          | -0,012 | 52  | -0,016 | 16             | ±0,25 | 47,0  | 35,7  | 15 | -0,20 | 15 | -0,20 |
| 30                             | GE30-SX     | 0,21              | 30          | -0,012 | 55  | -0,016 | 17             | ±0,25 | 50,0  | 36,1  | 16 | -0,20 | 16 | -0,20 |
| 35                             | GE35-SX     | 0,27              | 35          | -0,012 | 62  | -0,016 | 18             | ±0,25 | 56,0  | 42,4  | 17 | -0,24 | 17 | -0,24 |
| 40                             | GE40-SX     | 0,33              | 40          | -0,012 | 68  | -0,016 | 19             | ±0,25 | 60,0  | 46,8  | 18 | -0,24 | 18 | -0,24 |
| 45                             | GE45-SX     | 0,42              | 45          | -0,012 | 75  | -0,016 | 20             | ±0,25 | 66,0  | 52,9  | 19 | -0,24 | 19 | -0,24 |
| 50                             | GE50-SX     | 0,46              | 50          | -0,012 | 80  | -0,016 | 20             | ±0,25 | 74,0  | 59,1  | 19 | -0,24 | 19 | -0,24 |
| 55                             | GE55-SX     | 0,68              | 55          | -0,015 | 90  | -0,018 | 23             | ±0,25 | 80,0  | 62,0  | 22 | -0,30 | 22 | -0,30 |
| 60                             | GE60-SX     | 0,73              | 60          | -0,015 | 95  | -0,018 | 23             | ±0,25 | 86,0  | 68,1  | 22 | -0,30 | 22 | -0,30 |
| 65                             | GE65-SX     | 0,77              | 65          | -0,015 | 100 | -0,018 | 23             | ±0,25 | 92,0  | 75,6  | 22 | -0,30 | 22 | -0,30 |
| 70                             | GE70-SX     | 1,10              | 70          | -0,015 | 110 | -0,018 | 25             | ±0,25 | 102,0 | 82,2  | 24 | -0,30 | 24 | -0,30 |
| 80                             | GE80-SX     | 1,50              | 80          | -0,015 | 125 | -0,020 | 29             | ±0,25 | 115,0 | 90,5  | 27 | -0,30 | 27 | -0,30 |
| 90                             | GE90-SX     | 2,10              | 90          | -0,020 | 140 | -0,020 | 32             | ±0,25 | 130,0 | 103,3 | 30 | -0,40 | 30 | -0,40 |
| 100                            | GE100-SX    | 2,30              | 100         | -0,020 | 150 | -0,020 | 32             | ±0,25 | 140,0 | 114,3 | 30 | -0,40 | 30 | -0,40 |
| 110                            | GE110-SX    | 3,90              | 110         | -0,020 | 170 | -0,025 | 38             | ±0,25 | 160,0 | 125,8 | 36 | -0,40 | 36 | -0,40 |
| 120                            | GE120-SX    | 4,00              | 120         | -0,020 | 180 | -0,025 | 38             | ±0,25 | 170,0 | 135,4 | 36 | -0,40 | 36 | -0,40 |
| 130                            | GE130-SX    | 6,10              | 130         | -0,025 | 200 | -0,030 | 45             | ±0,35 | 190,0 | 148,0 | 42 | -0,50 | 42 | -0,50 |
| 140                            | GE140-SX    | 6,50              | 140         | -0,025 | 210 | -0,030 | 45             | ±0,35 | 200,0 | 160,6 | 42 | -0,50 | 42 | -0,50 |
| 150                            | GE150-SX    | 7,90              | 150         | -0,025 | 225 | -0,030 | 48             | ±0,35 | 213,0 | 170,9 | 45 | -0,50 | 45 | -0,50 |
| 160                            | GE160-SX    | 9,40              | 160         | -0,025 | 240 | -0,030 | 51             | ±0,35 | 225,0 | 181,4 | 48 | -0,50 | 48 | -0,50 |
| 170                            | GE170-SX    | 13,00             | 170         | -0,025 | 260 | -0,035 | 57             | ±0,35 | 250,0 | 194,3 | 54 | -0,50 | 54 | -0,50 |
| 180                            | GE180-SX    | 17,50             | 180         | -0,025 | 280 | -0,035 | 64             | ±0,35 | 260,0 | 205,5 | 61 | -0,50 | 61 | -0,50 |
| 190                            | GE190-SX    | 18,30             | 190         | -0,030 | 290 | -0,035 | 64             | ±0,35 | 275,0 | 211,8 | 61 | -0,60 | 61 | -0,60 |
| 200                            | GE200-SX    | 23,30             | 200         | -0,030 | 310 | -0,035 | 70             | ±0,35 | 290,0 | 229,2 | 66 | -0,60 | 66 | -0,60 |

-----  
1) Tragzahlen radial.

Maßtabellen



GE..SX – Anschlussmaße

| s    | A    | α<br>Grad | Kantenabstände          |                         | Anschlussmaße          |                        |                        |                        | Tragzahlen <sup>1)</sup>    |                               | Wellendurchmesser<br>d |
|------|------|-----------|-------------------------|-------------------------|------------------------|------------------------|------------------------|------------------------|-----------------------------|-------------------------------|------------------------|
|      |      |           | r <sub>1s</sub><br>min. | r <sub>2s</sub><br>min. | d <sub>a</sub><br>max. | d <sub>b</sub><br>max. | D <sub>a</sub><br>min. | D <sub>b</sub><br>min. | dyn.<br>C <sub>r</sub><br>N | stat.<br>C <sub>0r</sub><br>N |                        |
| 1,0  | 7,5  | 2,7       | 0,6                     | 0,2                     | 30,1                   | 39,5                   | 34,0                   | 43,0                   | 47.800                      | 239.000                       | <b>25</b>              |
| 1,0  | 8,0  | 2,4       | 1,0                     | 0,3                     | 34,4                   | 42,0                   | 40,0                   | 47,5                   | 57.500                      | 287.000                       | <b>28</b>              |
| 2,0  | 8,5  | 2,3       | 1,0                     | 0,3                     | 34,6                   | 45,0                   | 40,5                   | 50,5                   | 64.600                      | 323.000                       | <b>30</b>              |
| 2,0  | 9,0  | 2,1       | 1,0                     | 0,3                     | 41,1                   | 50,0                   | 47,0                   | 57,0                   | 78.500                      | 392.000                       | <b>35</b>              |
| 1,5  | 9,5  | 1,9       | 1,0                     | 0,3                     | 45,5                   | 54,0                   | 52,0                   | 61,0                   | 90.600                      | 453.000                       | <b>40</b>              |
| 1,5  | 10,0 | 1,7       | 1,0                     | 0,3                     | 51,7                   | 60,0                   | 58,0                   | 67,0                   | 106.000                     | 532.000                       | <b>45</b>              |
| 4,0  | 10,0 | 1,6       | 1,0                     | 0,3                     | 57,9                   | 67,0                   | 65,0                   | 75,0                   | 118.000                     | 590.000                       | <b>50</b>              |
| 4,0  | 11,5 | 1,4       | 1,5                     | 0,6                     | 60,7                   | 71,0                   | 70,0                   | 81,0                   | 149.000                     | 745.000                       | <b>55</b>              |
| 5,0  | 11,5 | 1,3       | 1,5                     | 0,6                     | 66,9                   | 77,0                   | 76,0                   | 87,0                   | 160.000                     | 802.000                       | <b>60</b>              |
| 5,0  | 11,5 | 1,3       | 1,5                     | 0,6                     | 74,4                   | 83,0                   | 84,0                   | 93,0                   | 173.000                     | 867.000                       | <b>65</b>              |
| 7,0  | 12,5 | 1,1       | 1,5                     | 0,6                     | 80,9                   | 92,0                   | 90,0                   | 104,0                  | 208.000                     | 1.040.000                     | <b>70</b>              |
| 10,0 | 14,5 | 2,0       | 1,5                     | 0,6                     | 88,0                   | 104,0                  | 99,0                   | 117,0                  | 244.000                     | 1.220.000                     | <b>80</b>              |
| 11,0 | 16,0 | 1,8       | 2,0                     | 0,6                     | 100,8                  | 118,0                  | 112,0                  | 132,0                  | 313.000                     | 1.560.000                     | <b>90</b>              |
| 12,0 | 16,0 | 1,7       | 2,0                     | 0,6                     | 112,0                  | 128,0                  | 123,0                  | 142,0                  | 339.000                     | 1.690.000                     | <b>100</b>             |
| 15,0 | 19,0 | 1,5       | 2,5                     | 0,6                     | 123,2                  | 146,0                  | 135,0                  | 162,0                  | 469.000                     | 2.340.000                     | <b>110</b>             |
| 17,0 | 19,0 | 1,4       | 2,5                     | 0,6                     | 132,9                  | 155,0                  | 145,0                  | 172,0                  | 498.000                     | 2.490.000                     | <b>120</b>             |
| 20,0 | 22,5 | 1,9       | 2,5                     | 0,6                     | 143,9                  | 174,0                  | 158,0                  | 192,0                  | 622.000                     | 3.110.000                     | <b>130</b>             |
| 20,0 | 22,5 | 1,8       | 2,5                     | 0,6                     | 156,9                  | 184,0                  | 171,0                  | 202,0                  | 663.000                     | 3.310.000                     | <b>140</b>             |
| 21,0 | 24,0 | 1,7       | 3,0                     | 1,0                     | 167,1                  | 194,0                  | 184,0                  | 216,0                  | 764.000                     | 3.820.000                     | <b>150</b>             |
| 21,0 | 25,5 | 1,6       | 3,0                     | 1,0                     | 177,7                  | 206,0                  | 195,0                  | 228,0                  | 872.000                     | 4.360.000                     | <b>160</b>             |
| 27,0 | 28,5 | 1,4       | 3,0                     | 1,0                     | 190,4                  | 228,0                  | 208,0                  | 253,0                  | 1.080.000                   | 5.440.000                     | <b>170</b>             |
| 21,0 | 32,0 | 1,3       | 3,0                     | 1,0                     | 201,7                  | 240,0                  | 220,0                  | 263,0                  | 1.310.000                   | 6.590.000                     | <b>180</b>             |
| 29,0 | 32,0 | 1,3       | 3,0                     | 1,0                     | 207,9                  | 252,0                  | 226,0                  | 278,0                  | 1.370.000                   | 6.850.000                     | <b>190</b>             |
| 26,0 | 35,0 | 1,6       | 3,0                     | 1,0                     | 224,1                  | 268,0                  | 244,0                  | 293,0                  | 1.540.000                   | 7.740.000                     | <b>200</b>             |